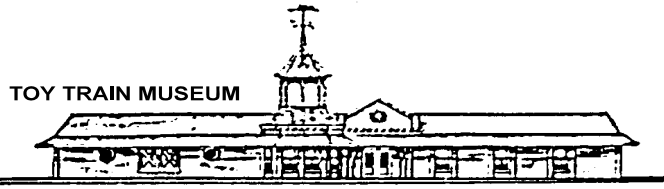


THE LAYOUT



ENJOY A VISIT TO YOUR MUSEUM

THE SOUTHERN DIVISION
TRAIN COLLECTORS ASSOCIATION

Fall 2012

VOLUME 46 NUMBER 4



Photo Above: Mike Powell Runs his Tiny Z Gauge Layout for the Kids.

In this Issue:

- Ride the Orange Blossom Cannonball!
- Photos of the Venice Meet
- Photos of Tim Evert's Open House
- The Incredible Traveling Train Layout
- La Posada
- Prominent Artist Joins Southern Division
- Southern Division Toy Donation

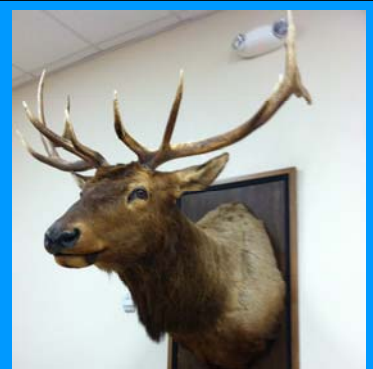


Photo Above: Bad Luck for Bambi at the Venice Meet!

Southern Division Board of Directors, Newsletter Editors, and Webmaster



President
Charlie Anyan
Home: 727-345-0288
Canyan1@tampabay.rr.com



Past President
Steven Harris
727-796-5721
Steven_L_Harris@msn.com



Vice President
Jim Herron
(340) 643-0006
Jim_Herron_jimwherron@yahoo.com



Webmaster
Jake Jacob
561-395-6069
Jjacob@gate.net



Secretary
Dienzel Dennis
PH: 386-258-8574
dieden39@aol.com



The Layout Distribution Manager
Jim Spangler
(727) 398-5343
idspangler@sprynet.com



Treasurer
Mike Powell
Phone: 727-559-1162.
Cell Phone 585-781-4996
MBPowell@aol.com

**No Photo Available:
Editor has gone to the dogs**

The Layout Editor
Jeffrey Mayer
Cell: 321-297-0501
jcimayer@aol.com



Communications Officer
Linda Harris
727-796-5721
Linda_A_Harris@msn.com

Get Well Soon
Best wishes for a speedy recovery to Jim Herron, Jack Windt, and Steve Harris.



Past President
Arnie Travitsky
(407) 260-8599
ARNI99@aol.com

Address Changes
Please inform the Southern Division Secretary Dienzel Dennis (see contact info on this page) of all address changes. Please do not send address changes to the editor of *The Layout* as that will only delay processing (As you can see this newsletter has gone to the dogs and the editor spends too much time digging holes in the backyard to process address changes).

President's Message



By any measure, our September meet in Venice was a success. We had sold-out tables and lots of guests through the door. Thanks go to Tim Evert, who successfully advertised, promoted, and

hosted the meet.

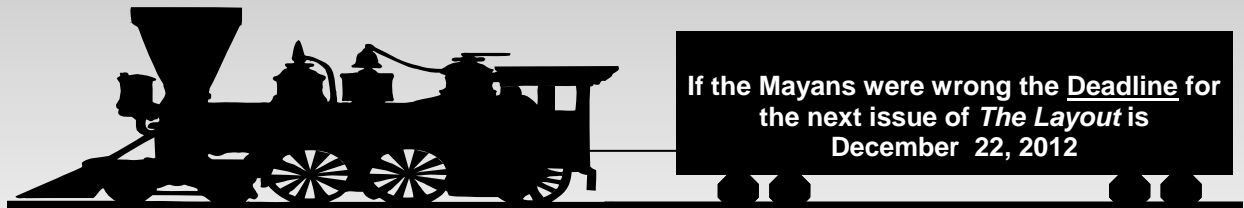
Next up is our Orlando Area (Maitland) meet. This year it is combined for our Super Weekend, with the Train Ride on Friday, open house at Clark and Ilene Vegazo's house Friday night, the meet on Saturday, and the "President's Banquet" on Saturday evening. Then you can go home, after a great weekend, and still have time to watch football on Sunday.

So look elsewhere in this issue to find out all the details. Be sure to fill out the form for the train ride, stick in a check, and mail it to Steve Johnson. Be sure to read the associated articles about the train ride, open house, the Meet Story, and the banquet, and directions to all the events. There are several other articles of interest, which I'm sure you will enjoy.

Charles Anyan, President, Southern Division, TCA

TEN REASONS TO JOIN THE TCA'S SOUTHERN DIVISION

1. Free admission for Southern Division members to all Southern Division train meets. (meets are heavily advertised in local newspaper, train magazines, Internet, etc). Reserve a selling table for a reduced price of only \$20 each.
2. Buy, sell, trade, and meet with local train enthusiasts.
3. A great opportunity to participate at the local level in the world's greatest hobby. Serving as a committee member or officer at the local level is very rewarding.
4. Wealth of information available from other collectors, operators, and layout builders. Fun and Fellowship with your Train Friends. Share in the excitement of the Toy Train Hobby.
5. Receive "The Layout", An informative newsletter published and mailed to every member quarterly. The Newsletter contains events, minutes of our Board of Directors meetings, complete guide for upcoming meets, and general articles of interest concerning toy and real trains, etc.
6. Access to the newly enhanced Southern Division web site
7. Reduced fees or free to attend Southern Division special events, open houses, and parties.
8. FREE coffee and pastries, at all meets, for tableholders and family until 9:00 am.
9. Door prizes, for both tableholders and visiting TCA members at every meet.
10. Free ads in *The Layout* for your items that are for sale!



Check out the Southern Division Website: www.tcasoutherndivision.org
Webmaster: Jake Jacob

Maitland Meet Story, 4th Quarter 2012, Saturday, November 17, 2012

Location: The First Presbyterian Church of Maitland, 341 North Orlando Ave (US 17-92, Maitland, FL 32751

Meet host: The Meet Host is Arnie Travitsky – (407) 260-8599 or email at Arni99@aol.com.

Set Up will be allowed from 7 a.m. to 9 a.m. Saturday. The meet opens to TCA members only 9 a.m. to 10 a.m., and to the public 10 a.m. to 4 p.m.

Admission: Public and non-Southern Division TCA members is \$5. Southern Division TCA members - FREE. Children under 12 free when accompanied by an adult. Plenty of free parking is available for members and the public. Concession for Breakfast and Lunch will be available.

The SD TCA Membership Meeting will be held at 9:30 a.m. Awards will be presented to members who contributed to the Southern Division and presented displays and operating layouts in 2012.

Your 2013 dues will be taken during the meet. Please pay Mike Powell - Southern Division Treasurer

Tables: SD members: \$20 TCA non-SD members: \$30.

We look forward to seeing everyone at the meet.

Please drive safely.

Have a safe trip for a fun meet.

Arnie Travitsky, SD – Past President

Meet Hotel

MEET HOTEL FOR THE WEEKEND NOV 15 –18
Hotel: MARRIOTT SPRINGHILL SUITES, 205 W. HIGHWAY 436. ALTAMONTE SPRINGS, FL. 32714
RATE: KING & DOUBLE BED \$ 79.00.

Handicap Room is available. Rates good for Nov 14-20.
ASK FOR TCA RATE Cutoff date for reservations at this rate is Nov. 9th. After this date you may have to pay more.
PH: 407-571-2346 Fax: 407-865-6773

Directions to the Meet

Directions from the Marriott Spring Hill Suites to the First Presbyterian Church:

Take State Road 436 to I-4 Westbound, 1-4 West to Maitland Blvd (Exit 90). Take Maitland Blvd. East to Orlando Ave (exit right before overpass). Turn right on Orlando Ave (17-92). The First Presbyterian Church is a few blocks up on your right.

Directions to the Train Ride from the Meet Hotel

Springhill Suites is on highway 436 at I-4. To get to the train ride, continue west on highway 436 for about 7 miles. At Apopka, 436 merges into highway 441. Continue west for about 20 miles, past Mount Dora to County Rd 452/N. St Clair Abrams Ave. it is the next stoplight past a Winn-Dixie on the left. There is a big sign for Hardees on the right. Turn left and follow St. Clair/Abrams Ave. it dead-ends at the train station

Directions to Sam Snead's

From our Meet Hotel, take I-4 south to exit 90 (first exit south). Go west on Maitland Blvd. about ½ mile to N. Keller Rd. turn right & take the first left into the Sports Complex. Turn left & go all the way to the South end of the parking lot.

Saturday Night, November 17, 2012

The President's Social Dinner

SATURDAY Nov. 17, 2012

MEMBERS & GUESTS, THE PRESIDENT'S SOCIAL DINNER

Sam Snead's Tavern, 1801 Maitland Blvd. Maitland, FL. 32810, Ph: 407-622-8800 6-7 p.m. cash bar, 7-10 p.m. dinner
COST \$ 21.00 / PER PERSON PLUS TAX & GRATUITY. Cash Bar. Each person is responsible for their bill.

See details in the reservation sheet enclosed in this issue of *The Layout*. Please reserve space so we can get a count of how many members are coming

Sam Snead's Menu:

- Chicken Marsala, served with Indian Saffron Yellow Rice
- Oak Grilled Certified Angus Beef Sirloin, served with Basil Red Skin Mashed Potatoes
- Fresh Atlantic Salmon served with Indian Saffron Yellow Rice
- Baby Back Ribs

Your meal includes garden salad and fresh baked rolls. Coffee, tea, and soda are complimentary.

Clark & Ilene Vegazo's Open House and Buffet

Friday Nov. 16, 5-10 p.m.

2225 West Dale Circle, Deland, FL 32720, PH 386-740-1293

Clark and Ilene will be showing off their incredible collection of Postwar Lionel trains. With nearly 300 postwar sets on display with almost another 100 sets still in boxes, Clark's collection was featured in the November 2009 issue of *Classic Toy Trains Magazine*. Clark's 1200 square foot train room includes most all Lionel accessories including the Lionel Boat, dealer-displays, slotcars, etc. Since last year Clark has added 300 linear feet of display shelves!



There will also be a display of vintage (real) cars!

A buffet of variety of dishes, desserts, and beverages will be served at the open house, so come **hungry**

Directions to Clark and Ilene's Open House: From I-4 take exit #116 (26 miles north of Maitland), west 3.5 miles directly to West Dale Circle. Turn left (south) onto West Dale Circle and proceed to the 2nd from the last house on the left. Just look for the American Flag at the driveway entrance.



Tavares Train Ride Information

In the last issue of The Layout, I outlined our proposed train ride on the Tavares, Eustis & Gulf Railroad, in Tavares, FL. Now I will detail how to register and attend the ride. I'll repeat what I wrote last issue for those that missed it last issue (or forgot). Next, I'll tell you how to sign up.

All Aboard for a trip on the Orange Blossom Cannonball, **Central Florida's historic steam train!** America's #1 Movie Train gives you the opportunity to **ride on the actual train that starred in many award winning motion pictures** including: "True Grit", "Appaloosa", "3:10 to Yuma", "There Will be Blood", "Rosewood", and "Oh Brother, Where Art Thou?". We will travel in vintage coaches pulled by our 1907 2-6-0 steam locomotive. Enjoy the sights and sounds of a real steam engine pulling your train as we travel to Lake Jem, Florida. Listen to the engine as it chugs up the grade and hear that lonesome whistle that only a steam engine can supply. The engine is the only wood-fired steam locomotive still operating in regular service on standard-gauge rails in the U.S.



Photo Above: The Orange Blossom Cannonball.

Here is what is included:

Special trip on Friday, November 16th (The day before the meet – Read the directions to the Train Ride in the Meet Story article).

Morning train help – Starting at 11:30 AM, members can help prepare the train for the ride and tour the cab – climb up in the engine cab and see operation – learn details & history of engine.

Ride starts loading at 12:30 PM, ride leaves at 1 pm

Two hour train trip. We climb off at destination & watch switching operation for return trip. Includes train run-by photo opportunities.

Our own private car – not fancy, but has restroom. There are about 50 seats on the car.

Ride in the caboose if you want to. Caboose is available only to our members on the tour.

Narrated tour – conductor points out details & history along route.

Lunch served during trip (locally-procured lunch from restaurant)

Soft drinks, wine & beer served during trip. Each adult rider gets one free alcoholic beverage, if desired. Additional drinks are available at \$3.00 each. Free soft drinks are unlimited.

Snack car available for additional food purchases (snacks) if wanted.

Photographer available during trip to take souvenir photos of you & your girlfriend (or wife) during trip (at additional cost to member).

Here's the good part:

Normal rate to ride the train only is \$24; normal group rate is \$20. No lunch is normally available, drinks are \$3.00, snacks cost extra.

For Southern Division members and guests, **TOTAL COST WILL BE \$10 EACH FOR ALL OF THE ABOVE.**

SOUTHERN DIVISION WILL PAY ALL OTHER COSTS. This doesn't include extra snacks or drinks.

Tavares is about 28 miles northwest of our meet hotel in Altamonte Springs. We could car-pool.

OK – Here's how to sign up for the ride: first, **THIS RIDE IS ONLY FOR SOUTHERN DIVISION MEMBERS, THEIR SPOUSES/SIG. OTHER, and MEMBER'S CHILDREN.** ALL OTHERS PAY FULL FARE (NORMAL GROUP RATE). **YOU MUST REGISTER AND PAY IN ADVANCE FOR ALL RIDERS.**

TO REGISTER, FILL OUT THE FORM INCLUDED IN THIS ISSUE OF "The Layout" and mail it, with your check to Steven Johnson, 9202 Beauclerc Circle W., Jacksonville, FL 32257

For questions, Steve can be reached at 305-335-1752 or email at SJohnson@FLJD CPA.com

Tim Evert's Open House



Photo Above: Tim with his collection which features Lionel trains from 1966.

Photo Left: Tim and Sue Evert. Many thanks to Tim and his family for hosting a wonderful open house.

Photo Above: Tim put out a nice table full of food. Unfortunately, hungry Southern Division members ate the rare New Haven F-3s.

Photo Directly Below: Southern Division members pose with Tim.
Photo Bottom: Lionel Trains from 1966!



Photo Above: Michael Evert poses with the trains.

Photo Below: Tim's huge collection of 6014 series boxcars.



Displays at the Venice Meet



Photo Above: Matt and Al Michelini put together this incredible display of English Marx Trains



Photos of the Venice Meet



**TCA SOUTHERN DIVISION BOARD OF DIRECTORS MEETING
SEPTEMBER 7, 2012—VENICE, FLORIDA**

President Charlie Anyan called the meeting to order at 3:35 p.m. at the Marriott Hotel in Venice, Florida.

In attendance along with the president were; Dienzel Dennis, secretary; Mike Powell, Treasurer; Linda Harris, Communications Director; and Directors Arnie Travitsky and Steve Harris. Vice-president Jim Herron was not in attendance because of health issues. Also present were Southern Division members Tim Evert, Brad Woodward, Bob Mintz, and Dick Tashjian.

Local host Tim Evert reported that tomorrow's meet plans are going great. Tables have all been sold out for over 2 weeks. The trading hall did not have enough tables of their own but we were able to borrow tables from 2 different local churches, without cost, to fill our demands. The hall is already set up and is very tight with that many tables. After this great report, Tim left our meeting to go back to the trading hall to help early set up arriving members. As a note, Tim was able to get 7-10 local collectors to help him arrange the hall. Also, there will be an open house tonight at Tim's home and all members are invited.

Linda Harris reported on all the different ways she has advertised this meet, along with our other up coming meets. It has been noticed in Hobby magazines, T. V., newspapers, flyer distribution, Craig's list, and the TCA Eblast, among others. We are expecting a good turn out tomorrow because of all this advertising.

Mr. Anyan reported on Jim Herron's surgery on Thursday and said that Jim had given his proxy vote to Bob Mintz. However, this is not allowed by our by-laws so we continued with our assembled quorum.

The status of the Maitland meet in November was discussed along with the train ride on the preceding Friday. **Be watching for details in the near future.** You will be very pleased with what your club is providing. Clear your calendar for both Friday and Saturday as this will be a great week-end for the SD.

Another open house is scheduled for Friday evening at Clark's house. You will not want to miss this great Post-War collection; and our business meeting will be at this time and place. The annual banquet is scheduled for Saturday night. Come early and stay late as this will be a great week-end to kick off the holiday season.

The next Largo meet is progressing smoothly.

A report was given on the recently concluded TCA National Convention in Atlanta. Linda and Arnie will work on the Kid's club members who live in Florida. Mr. Anyan talked about the Southern Division Presidential Succession Planning proposal. A brief review was given on the 10 #9110 hopper cars from TCA. No action was taken on the donation request from the TCA museum committee for display lighting.

Treasurer Powell gave his report on both the Jacksonville meet and the 2nd quarter report. Dienzel Dennis, secretary reported that we are only 17 members short of the half century mark. We have 483 active members with 149 inactive and 23 have passed on in the last 5 years of his term as secretary. He also has all of next years membership cards printed and they are ready to be distributed upon members payment.

Executive Session: We went into an executive session at 4:30

We took a short 5 minute break at 4:40

Back in executive session at 4:43

Out of Executive Session: We exited the executive session at 5:07

There was no official report from the Awards Committee or the Bylaws Committee

The Election Committee's report was discussed during the Executive Session.

Old Business:

Linda and Jake Jacobs will continue to coordinate the web page and the face book.

We will have a drawing at the end of tomorrow's meet, for all table holders, to win a free table at a meet sometime during the next year at your choice. We hope this will entice current table holders to remain until the trading hall is scheduled to close. After discussing the start time of our meets, they will remain as usual.

New Business:

Mr. Anyan will continue to check on our club advertising with PBS during the show "Tracks Ahead"

It was decided to leave the date for the Jacksonville meet at the same time as the past 2 years.

We discussed wives as helpers at our meets, and decided to let the table holder decide if he wants to declare his wife as his helper and pay for her entrance, or for her to come as family at no charge.

We will continue to stay with our recently decided policy of free admission for SD members to our local meets.

No action was taken concerning celebrities who attend our local meets.

Our final discussion was concerning the possibility of a new meet in South Florida. Bob Mintz presented a proposal to have a meet at the Gold Coast Railroad Museum next year during National Railroad Days. It has a lot of possibilities but also a lot of unknowns. Mr. Dennis made a motion with a second by Mrs. Harris. "We should have Mr. Mintz and Mr. Tashjian check out all the pros and cons and bring a concise report back to the board at the Maitland business meeting." We will proceed with the discussion at that time. Motion passed 6-0

There being no further business, the meeting was adjourned at 6:20 p. m. Respectfully submitted, Dienzel Dennis, SD Secretary

Under the Layout – Tips by Jeffrey Mayer

There's a whole world unseen world going on under your layout. Many people use it for storage, but everyone needs to be able to access their wiring. Here are a few useful tips that can make it a lot easier to work underneath your layout.

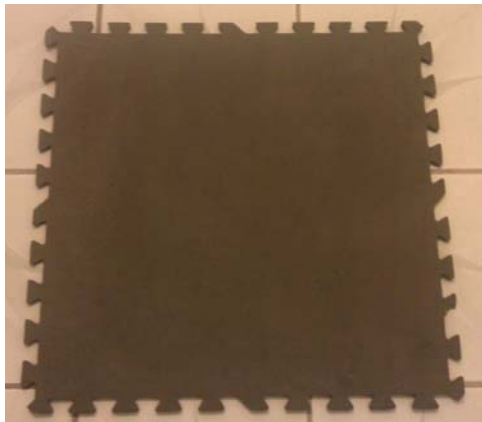


Photo Above: Square foam mats are sold in packs of four and fit together like puzzle pieces.

Depending on whether your layout is built in a carpeted room, tile, linoleum, or a hard concrete floor, you'll experience varying degrees of difficulty crawling under your layout on your hands and knees to access wiring. To avoid the uncomfortable prospect of crawling on a cold, hard concrete garage floor I found foam padding squares to lay down. These 2' x 2' half-inch thick squares are sold cheaply (usually on sale for \$7-\$10 for a pack of four) at Harbor Freight tools and fit together (like puzzle pieces) to form a path for crawling underneath. Get some and your knees will thank you.

It's dark down there and you'll need to be able to see what you're doing. Sure, you can bring a flashlight, but it's tough to hold a flashlight and strip, route, and connect wires with one hand. At first I tried a battery-operated fluorescent lantern which worked to some extent. The light usually needs to be focused upwards directly to the underside of the table where most of the wiring is concentrated. Placing the lantern on the floor distributed the light from sideways and not upward towards the wiring. This limited its usefulness. Hanging it from a hook directly underneath the tabletop worked but the lantern needed to be moved to different work locations, which required more hooks and became a nuisance.

The best solution came when I found something called a "LED Rope Light" at Wal-Mart. Similar to Christmas tree lights, the flexible clear plastic strand can be permanently mounted directly under the tabletop and plugged into an outlet strip. The LED Rope light come in 12' lengths and like standard Christmas lights can be connected together to make one long strand.



Photo Above: An LED rope light mounted under the train layout.

Because they are LEDs, they give off minimal heat and don't require bulb replacement (also, no glass bulbs to break). I used the white light LED strand (they also offer colors, but I'd expect the colored lights to be dimmer).

Although I wouldn't describe the light as exceptionally bright, when strategically

positioned around the areas where the layout's wiring runs there's enough light to work comfortably. Each strand costs just under \$15 (more stores carry them around Christmas but Wal-Mart seems to have them year round).

The LED rope lights work pretty well, but sometimes a situation calls for a little more focused light. The final key to solving my under-layout lighting issues was a headlight. Similar to the old lights attached to coal miner's helmets, these LED lights have a strap to mount them to your forehead which conveniently shines the light at whatever you're looking at. Harbor Freight Tools has them for \$5 (get the LED one) but they are available at most discount and home improvement stores (better ones sell for up to \$15). You'll look like a dork wearing one, but it will keep you out of the dark.



Photo Above: Yorick, a former member of the Southern Division, models an LED headlight..

The Legendary Oasis of La Posada by Charles Anyan

Note: When I went to the National TCA Convention in Phoenix AZ a few years ago, one of the tours took in the La Posada hotel. I visited the hotel, and was very impressed, not only by the hotel, but its Santa Fe railroad history. I thought you might like to read about it, and, if you ever are traveling through the west, be sure to visit this place, and try to stay there at least one night.



La Posada (1930) was the last and most elegant of the great Fred Harvey Hotels built by the Santa Fe Railroad. It was designed by Mary Colter – perhaps the greatest architect of the Southwest – as a fabulous Spanish hacienda. Colter is famous for her magnificent buildings at the Grand Canyon, but La Posada was her favorite.

Fred Harvey “civilized the west.” He introduced linen, silverware, china, crystal and impeccable service to railroad travel. He was so legendary that MGM made a movie about Harvey’s hotels – “The Harvey Girls” – starring Judy Garland. Harvey developed and ran all the hotels and restaurants of the Santa Fe Railway, eventually controlling a hospitality empire that spanned the West.



In the 1920s the Harveys decided to build a major hotel in the center of Northern Arizona. “La Posada” – the Resting Place – was to be the finest in the Southwest. Construction costs alone exceeded \$1 million in 1929. Total budget with grounds and furnishings was rumored at \$2 million – about \$40 million in today’s dollars.



They chose Winslow – The Arizona headquarters for the Santa Fe Railway. Winslow was ideally situated for a resort hotel since everything to see and do in Northern Arizona is a comfortable day’s drive. In its heyday, Winslow was the biggest town in Northern Arizona. Charles Lindbergh designed their airport.

They asked Mary Colter to design the new hotel. Mary Colter (1869 – 1954) was a true American genius. Through life-long study she became a master of light, color, and materials. In 1910 she became chief designer and architect for the Fred Harvey Company – an amazing achievement, since women couldn’t vote for President until 1920!!

La Posada was the only project for which Mary was able to design the buildings, decorate the interiors, plan the gardens and oversee construction.



The Legendary Oasis of La Posada, continued

The original hotel had seventy guest rooms, three dining rooms, fancy lounges, restful arcades, splashing fountains, and museum quality furniture. It was surrounded by eight acres of fragrant and beautiful gardens. All the passenger trains made a stop just outside the front door. It was the fanciest hotel on route 66 in the entire Southwest. Imagine – Route 66 on one side and the main route of the Santa Fe on the other side.

It was the finest hotel ever built by the Santa Fe, and a favorite retreat for Hollywood stars and other famous people. *Everybody* stayed there, from Howard Hughes to John Wayne, Bob Hope to Dorothy Lamour, Albert Einstein to the Crown Prince of Japan, to Presidents Roosevelt and Truman. La Posada opened May 15, 1930, just after the [stock market crash](#) of 1929, and remained open for just 27 years.



Photo Above: Charlie & One of the Original “Harvey Girls”, Now a Tour Guide

found out about La Posada’s peril and added it to their endangered list. It was purchased from the Santa Fe by a private party in 1997 and restored with the help of the many photos of the property. It is now open for business. It is a railroad watcher’s dream. The BNSF freight trains roll through day & night. Amtrak even has a station in the hotel.

So be sure to stop here if you are in this area. When you get home, you can do what this person did:

Build a train layout that has a model of La Posada in the scenery, complete with gardens. I don’t know who supplied this photo, because it was not credited. Many of the photos and text were taken from various sources, most not credited, but most of the photos were taken from La Posada web site, and a lot of the text was taken from the brochure that La Posada hands out in the hotel.

Photo Right: A garden layout complete with a model of “La Posada”.



But somehow people got in too much of a hurry to stop in Winslow. Train ridership dropped. People flew on faster airplanes. Route 66 was bypassed and abandoned.

In 1957, the hotel closed to the public. The museum-quality furnishings were auctioned off in 1959. In the early 1960s, much of the building was gutted and transformed into offices for the Santa Fe Railway. Several times over the ensuing 40 years, the building was nearly demolished, as recently as 1994 when the railway announced its plans to move out for good.

The National Trust for Historic Preservation found out about La Posada’s peril and added it to their endangered list. It was purchased from the Santa Fe by a private party in 1997 and restored with the help of the many photos of the property. It is now open for business. It is a railroad watcher’s dream.



The Incredible Traveling Train Layout (which was never meant to travel) by Jeffrey Mayer

Way back in 2008 you may remember articles in *The Layout* which detailed progress on a train layout built for the Ronald McDonald House (RMD) by Southern Division members Barry Broskowitz, John Bailey, and myself. This 4'x 8' layout was built in the playroom of the Orlando RMD using materials donated by Mike's Train House (MTH), Mianne Benchwork, and the Southern Division.

Unfortunately we encountered a number of issues in supporting and maintaining the RMD layout. First, the staff at RMD weren't "train people" and couldn't seem to grasp even the simplest instructions for controlling or maintaining the trains. It seemed that every time a train derailed it put the layout "out of order" until one of us went over there to simply put the train back on the tracks and reset the DCS. Also, we hadn't realized that staff was unable to supervise the "playroom" where the layout resided, which resulted in scenery being damaged or stolen. Finally, back in summer 2011, the management of RMD informed us that they were renovating the playroom and would no longer have space for the layout. The search began for a new home.



Photo Above: The layout at its (hopefully) final resting place in the media center of Crystal Lake Elementary School.



Photo Above: A view of the layout.

Barry contacted Seminole County Public Schools, and before long connected with school administrators from The Hopper Center, a school for special needs students in Sanford, Florida. The prospect of an operating layout for their students thrilled the administrators and we made arrangements to move the layout to The Hopper Center. After several weekends of disassembly and reassembly the completed layout became operational again at its new home. Teachers and students at The Hopper Center took to the layout and enjoyed operating and learning about the trains. Also, this time the layout resided in a secure location so we didn't need to worry about damage.

The bad news came about three months later. While listening to the radio one morning I heard that Seminole County Public Schools was closing The Hopper Center due to budget cuts. I called Barry and ruined his day. We would have to move the whole layout again.

Fortunately, through Seminole County Public Schools, Barry found a home for the layout at Crystal Lake Elementary School in Lake Mary, Florida. After much grief moving a layout that was never designed with portability in mind we had it up and running in the school's library. Again, the wonderful staff at the school supported the layout, using it as a teaching tool. Better yet, and as a complete surprise to us, students took the time to learn about the operation of the trains to the point where they were able to understand the basics of control and fix operating issues as they came up!

Hopefully the Incredible Traveling Train Layout has found a permanent home (mostly because I'd rather jam a sharp stick in my eye than move it again)!

Serving the Southern Division—2012 Board of Directors Nominations

Would you like to serve the Southern Division? The Division is seeking qualified members to run for President, Vice President, Treasurer, Secretary, and Communications Officer.

To run for office you must be a current TCA National member for one year in good standing and a Southern Division member currently residing in Florida. Qualified candidates must be able to attend Southern Division Board of Director's meetings as scheduled.

The winners will serve for two years (2013 –2015) starting January 2013. Arnie Travitsky will serve as chairperson for the election which will take place in December, 2012. Should you wish to serve the Southern Division by running for any of these positions, please contact Arnie Travitsky, Past President (see contact info inside the front cover of *The Layout*).

Final nominations will be taken from the floor at the Business Meeting held at our November meet in Maitland, Florida.

Southern Division Toy Donation to Hospital by Charles Anyan

The TCA National Business Office had a surplus of “Cuboose” bears, custom-made by Boyd’s Bears. At the national TCA Convention, it was suggested that we donate the bears to Children’s hospitals for young patients to use. I thought this was a good idea, and volunteered to take some.

The first hospital to receive a shipment of the bears (3 cases) was The Children’s Hospital of Southwest Florida, Ft. Myers, FL, suggested by Bill Kotek, our National Treasurer and Southern Division member. Bill and I



showed up at the hospital on September 7th, (the day before the Venice meet) to meet the hospital representatives and take a photo. Ms. Stacie Margaritis expressed thanks for the donations, and showed us around the children’s play areas. It was a rewarding day, and we plan on donating more bears to other hospitals in the coming days. **Shown above, L to R: Bill Kotek**, National Treasurer; **Jo Abney**, Customer Service Representative, Pediatric Outpatient Cancer Center; **Stacie Margaritis**, BA, CCLS, Certified Child Life Specialist, Pediatric Hematology/Oncology; **Charlie Anyan**, President, Southern Division, TCA

PROMINENT RAILROAD ARTIST JOINS SOUTHERN DIVISION By Charles Anyan

At the recent TCA Convention in Atlanta, I had several discussions with Robert West, the well-known artist, who specializes in painting trains. I am familiar with his work, as I have several of his prints in my home.

I mentioned that I had seen him several times, in York and at train shows at the state fairgrounds train shows in Tampa. His home studio is in Atlanta, which is one reason why he was at the convention. I mentioned that since he is so close to us, and he goes to shows in this area, that he ought to join our Southern Division. This way he could get all the information on our meets from “The Layout”. So he joined us. Note that in the photo above, the center painting is of an Atlantic Coast Line train going through Plant City. Incidentally, I have several extra of his prints for sale, because I have run out of space on my walls for any more paintings. So if you are interested, stop by my table in Maitland, not necessarily to buy, but to admire his work.



Switch List

For Sale: O22 Switch Controllers (need rewiring); O27 Track, Gargraves 2-rail track; Super O #120 Crossover; #36, 37, 48, 32-20; LW, TW, SW, 1033 Transformers; #19 Bulbs; #167 Whistle Controller; 1866, 1875, 1876 cars; TCA Bicentennial Special Set. 12948 Bascule Bridge, 2623 Madison Cars, 3356 Horse Car and Corral; #6357, 2411, 2454 2452; 2452X; 6462;6012; Lionel Watch, All Reasonably Priced. Call **Paul Dean 352-223-4510** Also **Wanted:** 2530 Large Door baggage car and PW

Repairs: Done on American Flyer Trains by A.C. Gilbert Reasonable prices, honest assessment of Parts & Labor. Alco & Geep Rebrushings: Single - \$ 20.00; double - \$ 35.00 **Call or Write: Chris Lucibello 2483 Pinellas Pt. Dr. So., St. Pete, FL 33712 (727) 867-3465 candklucibello@verizon.net**

FOR SALE: LIONEL POSTWAR, PREWAR, LTI, MTH, Have MTH RAILRAX TRACK , curves, straights. **ARNIE TRAVITSKY, 873 CYNTHIANNA CIRCLE, ALTAMONTE, SPRINGS, FL. 32701 arni99@aol.com 407-260-8599 LSASE FOR LIST.**

Now Available! The 2nd Edition of The DCS O Gauge Companion, by Southern Division Member Barry Broskowitz, includes 43 additional pages, or nearly 20% more information than the original edition. This extensive 215-page four color guide for operating the MTH Digital Command System, or DCS, includes 64 charts and illustrations, 14 more than the original edition, all intended to educate the reader on the basic and advanced features and functions of DCS. Also available for download from the M.T.H. online store for \$12.95. The link for ordering either the eBook or print book is: <http://www.mthtrains.com/content/60-1279>

Downsizing 40 year Lionel collection: Post war, Pre-war, MPC. Several hard-to-find pieces. Call or email Lloyd Godwin, 863-668-5653 lkjsg@gmail.com

The Switch List is a free service to Southern Division Members. Send your ads (space permitting) for trains for sale/wanted/trade to Jeffrey Mayer, email icjmayer@aol.com or call me at 407-366-8995. Ads must be renewed prior to each issue of The Layout. You may renew your ad for **one** issue at a time by contacting me via email or snail mail.

LIONEL TRAINS FOR SALE

1. DISNEY SET.E-P 5 ENGINE AND CABOOSE & ALL 13 CARS. MINT & ORIGINAL BOXES \$700.
 2. 6464-1971 MICKEY MOUSE CONVENTION CAR-MINT-HAS A BOX BUT NOT ORIGINAL.\$200.00
 3. 6464 SERIES COMPLETE 28 IN ALL GD TO EX Call or email for details and price
 4. CONRAIL PASSENGER SET.REPAINTED 5 0-27 MPC CARS & POSTWAR AA ALCOS \$250.00
 - 5.1950'S HUDSON.ALL ORIGINAL BOX,INSERTS,INSTRUCTION SHEET & LIONEL WRAP .EVRYTHINGWORKS.LIGHT,WHISTLE,SMOKE & E-UNIT.\$2000.00 O.B.O.
 - 6.PENN. RR PENCIL.UNSHARPED.2 SMALL NICKS AT THE TOP & BOTTOM.BROWN IN COLOR WITH GOLD P.R.R.SOME FADING ON GOLD PAINT MARKINGS. E-MAIL FOR PIC \$5 (FREE SHIPPING)
 - 7.1949 WALLET SIZE CALENDER OF THE MISSOURI PACIFIC R.R.E-MAIL FOR PICTURE.EX CONDITION.\$5(FREE SHIPPING)
 8. 1964 Hudson NYC Tender Only, broken step,\$125
- HALLMARK CHRISTMAS ORNAMENTS**
1. 1872 GENERAL W/TENDER-\$10
 2. 746 N.W. STEAM W/TENDER-\$10
 3. 2343 F3 SANTA FE DIESEL-\$10
 4. 700E N.Y.C. HUDSON-\$10 AND
 5. 400E BLUE COMET-\$10.00
 6. 4907 BRUNSWICK GREEN G.G.1-\$10.00 ALL MINT WITH ORIGINAL BOXES
- Lionel 1996 Accessory Catalog Ex to LN, \$5 +\$3 ship
Seven Atlas HO Controllers, \$5 for all.
Lou Vece, PO Box 211062, S. DAYTONA, FL 32121
E-MAIL santafe2353@yahoo.com PHONE 386-316-5464 . MAKE AN OFFER. Free shipping on all items!

WANTED Old Toys and Toy Trains. Cash buyer will travel the State. We can handle larger collections also. Call Dick Wilsen, 941-374-2288 or email, wilsen@comcast.net Thank you!

For Sale:

Lionel Postwar #6464-525 M&STL Boxcar C7, \$45
Lionel Postwar #155 Bell Ringing Crossing \$25
Lionel Postwar #6467 Flatcar/Bulkheads, C7 \$35
Lionel #1033 transformer, C7, working condition with new cord, \$30
Contact Jeff Mayer, 321-297-0501 or email me at icjmayer@aol.com